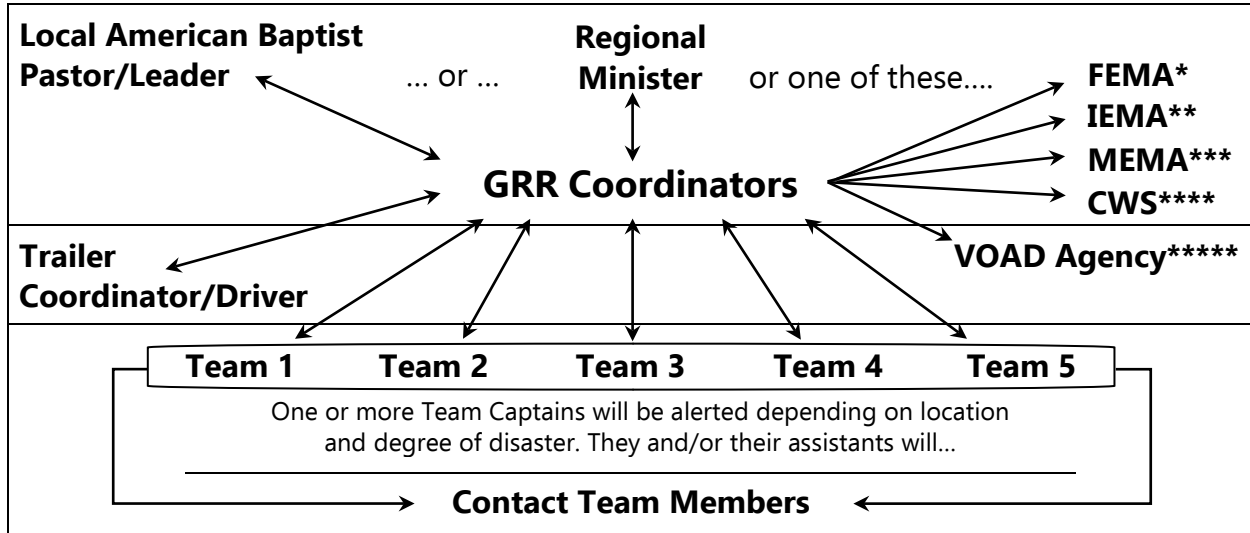


ABMen Disaster Relief Response Plan for Action

When disaster strikes in the Great Rivers Region or within a 500-mile radius of Springfield, IL, any of the following can contact the GRR Coordinators or the Coordinators can contact any below to determine if a need for response is present:



When a Disaster Strikes

- (1) Be Pro-Active. Call local contact (Mayor, Street Department, Local Emergency Management, Pastor) and offer our help.
- (2) Call Mac or Van and report need for help.
- (3) Site inspection and Advance Team led by Van and perhaps Team Leader. Will estimate how many volunteers needed and for how long.
- (4) Arrange for housing and food for team – Mac or Van will arrange.
- (5) Team Leaders initiate call for help to team members.
- (6) Team Leader makes arrangements to have a truck and driver on hand to move trailer to various work sites.
- (7) Call for additional help, if needed, will be out on ABMen's website and GRR website.