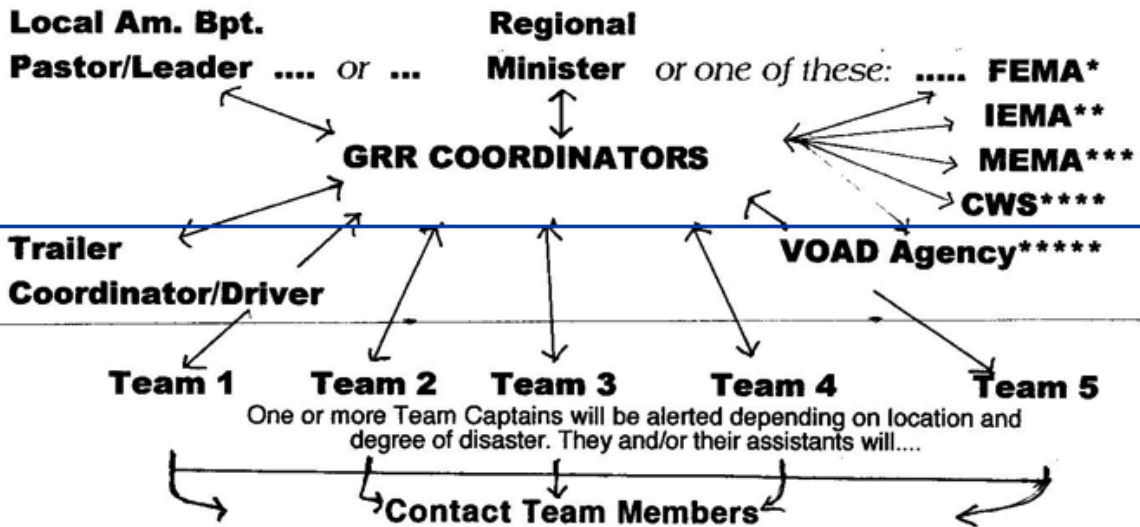


**American Baptist Men's Disaster Relief Response
PLAN FOR ACTION**

When disaster strikes in the Great Rivers Region or within a 500 mile radius of Springfield, IL, any of the following can contact the GRR Coordinators or the Coordinators can contact any below to determine if a need for response is present:



When A Disaster Strikes....

- (1) Be Pro-Active --call local contact (mayor, street department, local emergency management , pastor) and offer our help.
- (2) Call Mac or Van and report need for help.
- (3) Site inspection and Advance Team led by Van and perhaps team leader. Will estimate how many volunteers needed and for how long.
- (4) Arrange for housing and food for team--Mac or Van will arrange.
- (5) Team leaders initiate call for help to team members.
- (6) Trailer Coordinators will get trailer to site.
- (7) Team leader makes arrangements to have a truck and driver on hand to move trailer to various work site.
- (8) Call for additional help, if needed, will be out on ABMen's web site and GRR website.